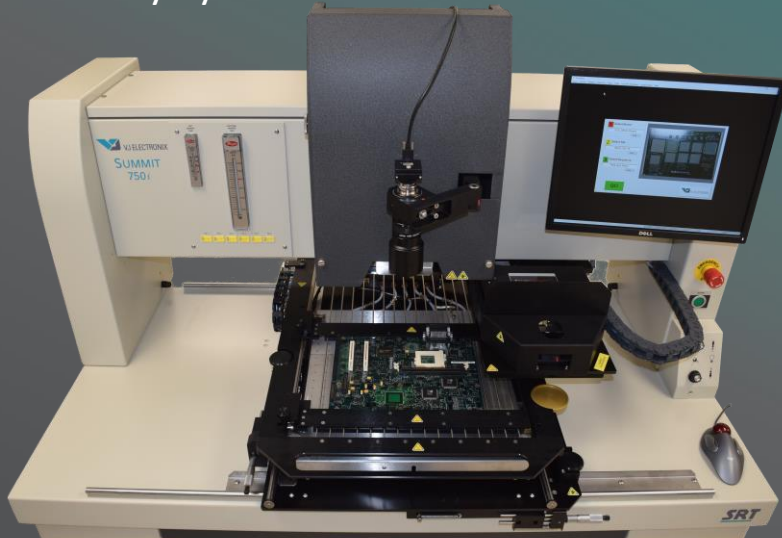


Summit 750i

Semi-Automated Rework System

Turn-Key System. Nozzles included.



**Largest Installed Base • Excellent Thermal Performance • Process Flexibility
Ease of Operation • Global Support • Industry Leading Reliability**

“1-2-3-Go” Graphical User Interface – Proprietary SierraMate™ Windows® based software provides an easy to use “1-2-3-Go” graphical user interface increasing user friendliness.

Efficient Convection Heating – Closed-loop temperature control ensures a more even heat distribution as compared to IR heating.

- Industry-leading speed, control, repeatability

Industry 4.0 Compliant – Automated data/event logging directly to your EMS.

- Enhanced profile sharing and user collaboration

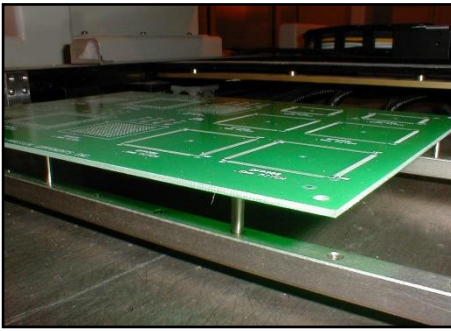
Comprehensive Tooling – Wide range of tooling available to meet your current and future rework needs.

Auto Profiling Capability – Fast and easy profile creation. Simply enter the desired product temperatures. After thermal profile is created, the entire reflow process is built automatically and ready to run.

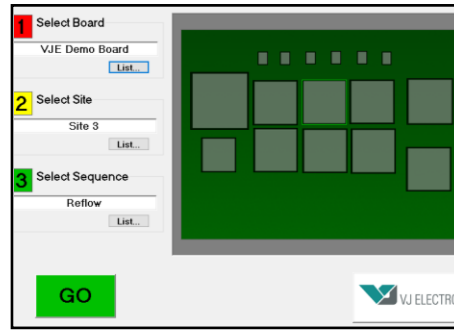
Independent Pick and Place – Motorized reflow head driven by an advanced motion system with programmable force control provides precision with total flexibility.

Digital Split Imaging – Digital split imaging allows up to four corners (and its pads) of a large component to be viewed under high magnification.

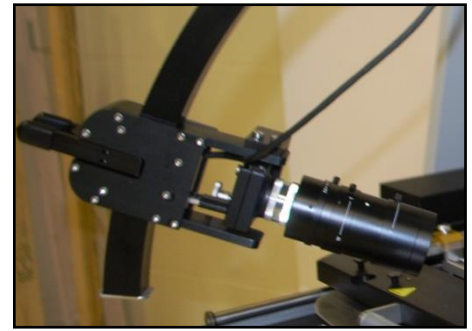
- Precise alignment of BGAs or fine-pitch QFPs



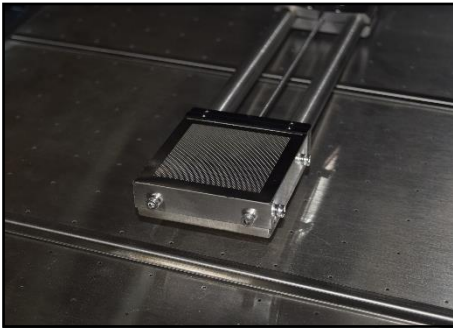
CONFIGURABLE BOARD FIXTURES



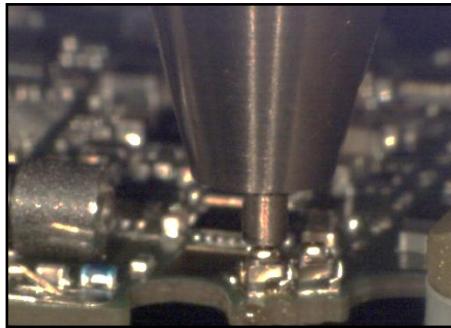
1-2-3-GO SIERRAMATE™ GRAPHICAL USER INTERFACE



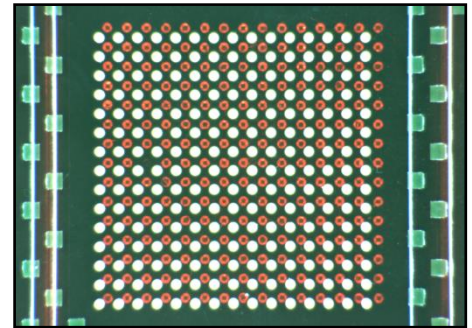
SIDE VIEW VISION SYSTEM



DUAL CONVECTION BOTTOM HEATERS



0201 REWORK



OPTICAL ALIGNMENT SYSTEM

Technical Specifications

Placement Capability	0.0020" (50μ) mean + 3σ	
Top Heater	1.6kW Focused Convection	
Bottom Heater	4.0kW Convection Plenum	
Z-Axis Motion	Independent & Programmable Z-Height Pickup Tube Independent & Micrometer Adjust Z-Height Top Heater	
Theta Motion	Manual Adjust Theta - 360°	
Field of View	2.0" (50mm) Square	
Max Board Size	18x22" (455x560mm)	
Component Range	0.010" (0.24mm) to 8" (200mm) Connectors	
Temperature Control	K-Type Thermocouple (Closed-Loop)	
Thermocouple Jacks	6	14 (option)
Compliance	CE, CAN/CSA, UL 61010-1	
Special Features	Programmable Placement Force Control Automatic Component Height Sensing & Alignment Height	

Why choose VJ Electronix

In a highly competitive SMT manufacturing market, quality and productivity are critical. VJ Electronix develops and manufactures all their products with this in mind. For decades, we have secured leading positions in a variety of markets through technological firsts and a variety of innovative customer-specific solutions.

VJ Electronix is the leader in PCB rework, x-ray inspection and x-ray counting systems. VJ Electronix's equipment help improve manufacturing costs and product quality.

VJ Electronix
19 Alpha Road
Chelmsford, MA, 01824
USA

Phone: +1 978 486 4777
www.vjelectronix.com

VJ Offices:
Bohemia NY
East Haven CT
Suzhou, China

Hartzviller, France
Bengaluru, India
Budapest, Hungary